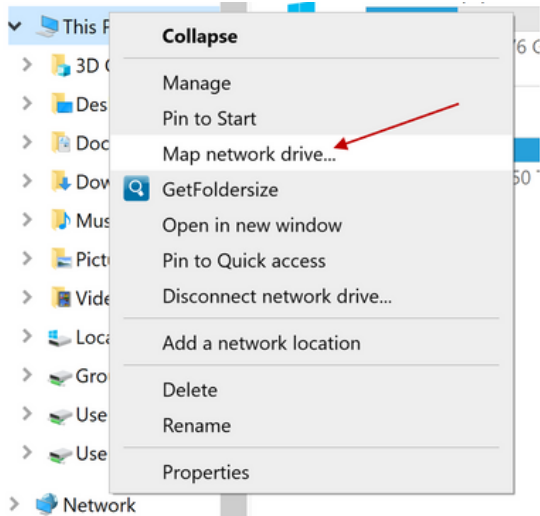


# Drive Mapping Instructions for EOL Users

You can optionally map your U drive to your personal computer – this gives you access to your files from your own computer. There is no sign-up or time restriction on drive mapping. You can keep your personal U drive mapped 24/7 if you want. You may also want to map the N drive to your computer for accessing some course materials. If off-campus, you will need to first connect to VPN.

## Windows

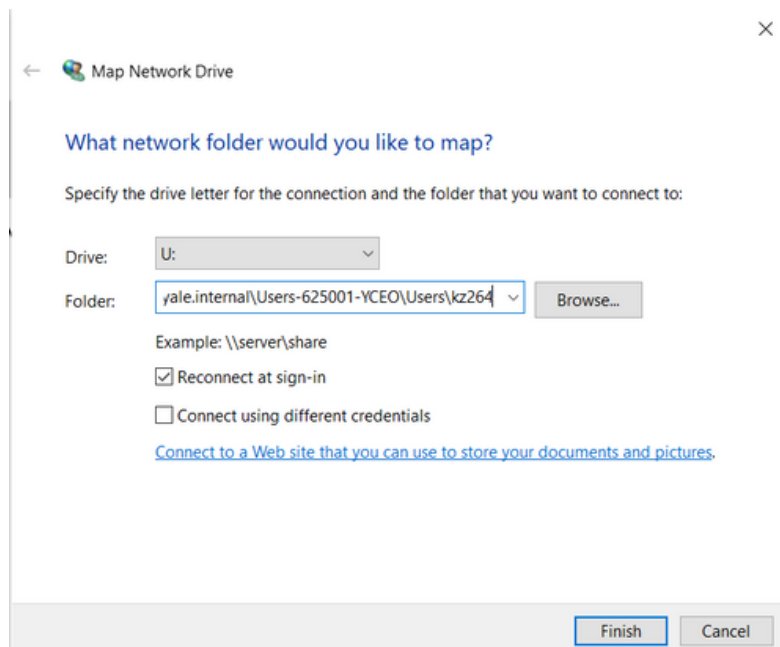
Open File Explorer, right click on “This PC” found on the left-hand pane and click on “Map network drive...”.



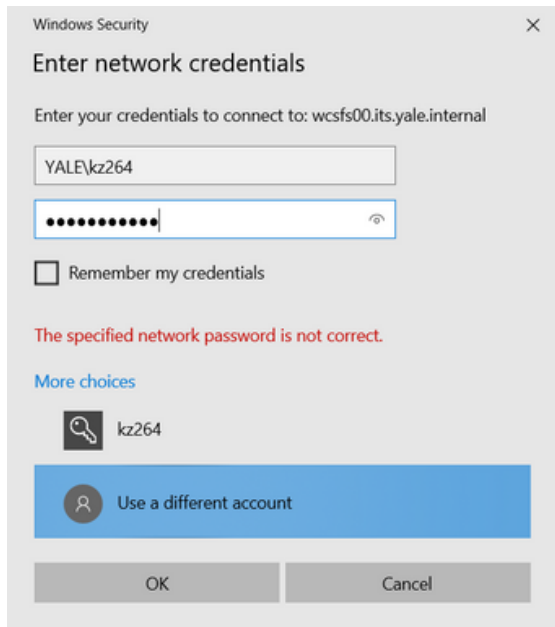
To map your U drive, Choose Drive U from the drop down menu in the “Drive:” field, enter the following line in the “Folder:” field:

\\wcsfs00.its.yale.internal\Users-625001-YCEO\Users\<Your NetID>

Now click Finish.



In the network credentials window, your username is YALE\NetID and the password is your NetID password. Click OK.



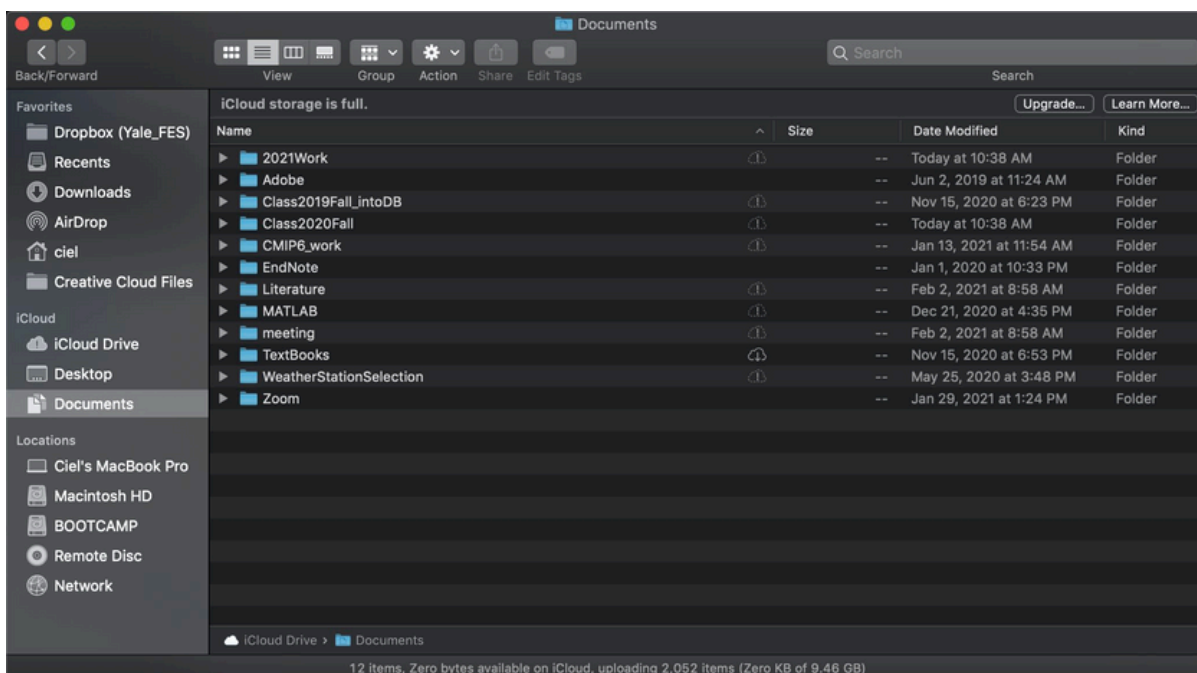
To map the N drive for access to course documents, repeat the above steps but with using N in the “Drive:” field and enter the following line in the “Folder:” field:

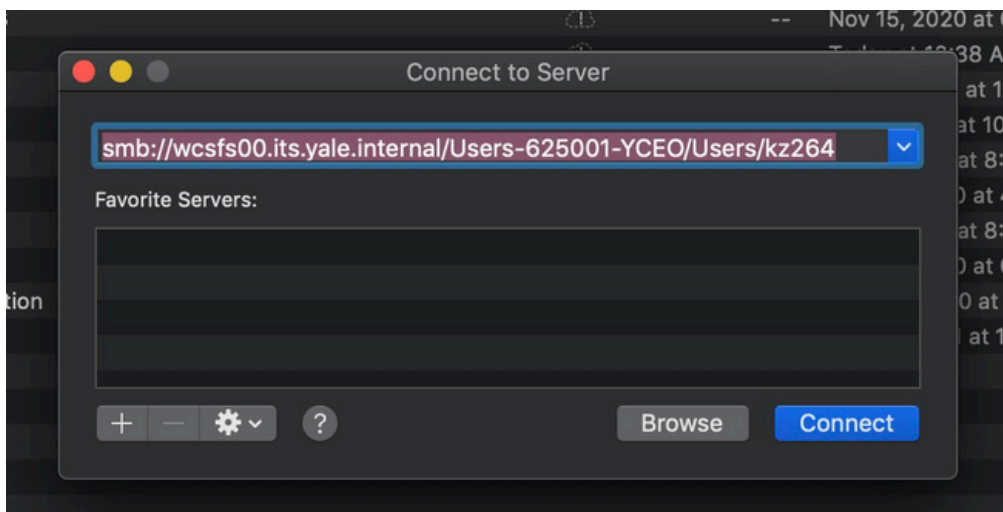
\\wcsfs00.its.yale.internal\Data-625001-YCEO\Groups

## Macs

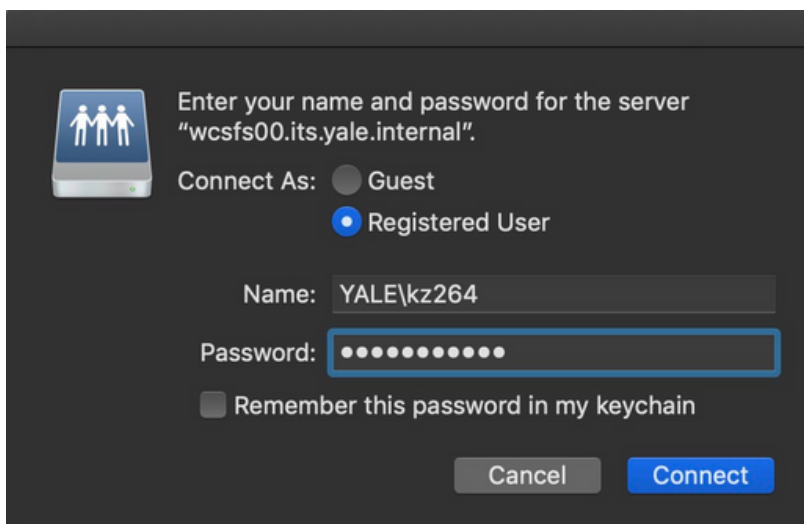
In Finder, use Command+K to bring up a Connect to Server window. To map your U drive, enter the following line:

smb://wcsfs00.its.yale.internal/Users-625001-YCEO/Users/<your NetID>





Click Connect to bring up a login window. Use YALE\<NetID> as your name and the password is your NetID password.



To map the N drive for access to course documents, repeat the above steps using the following line:  
smb://wcsfs00.its.yale.internal/Data-625001-YCEO/Groups

